



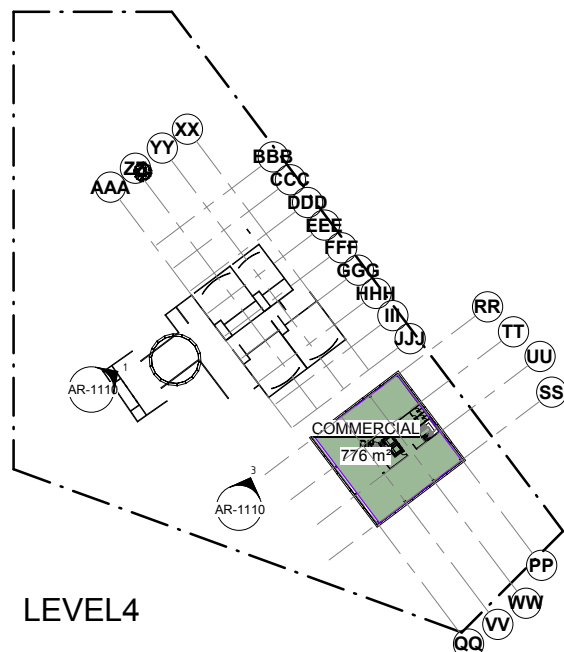
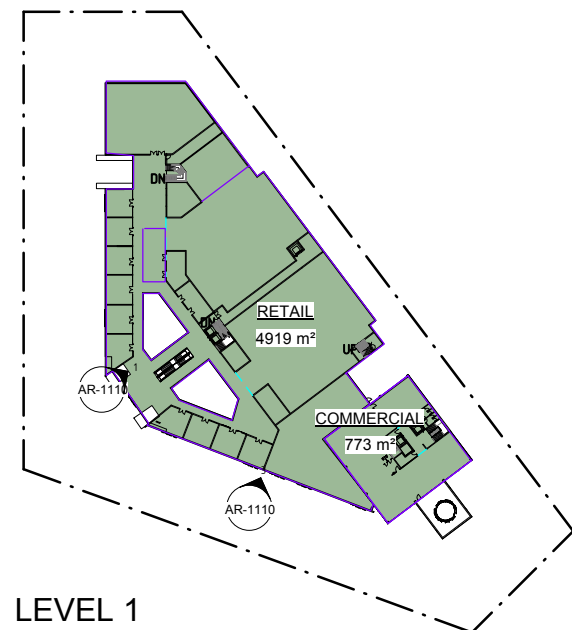
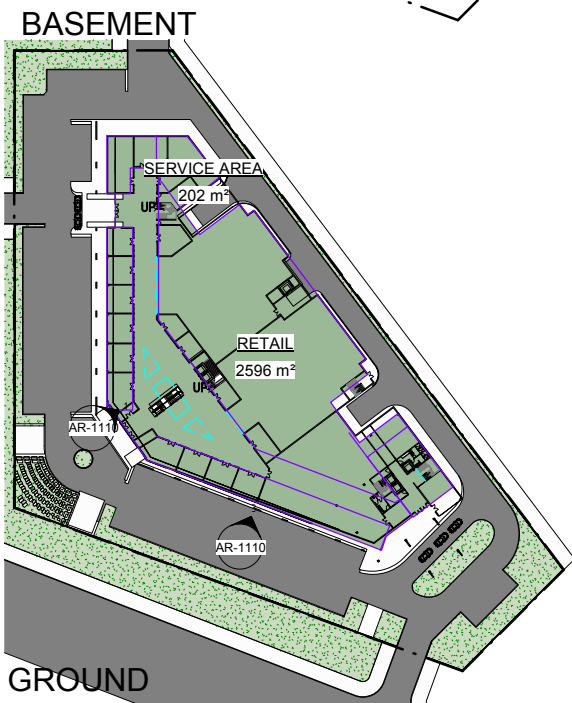
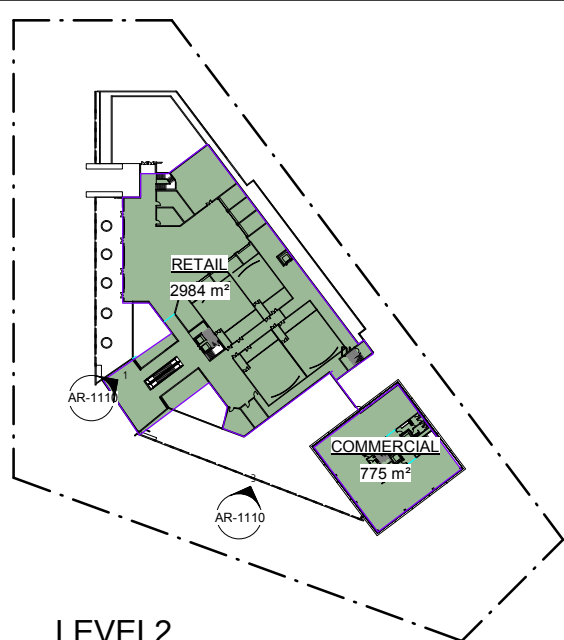
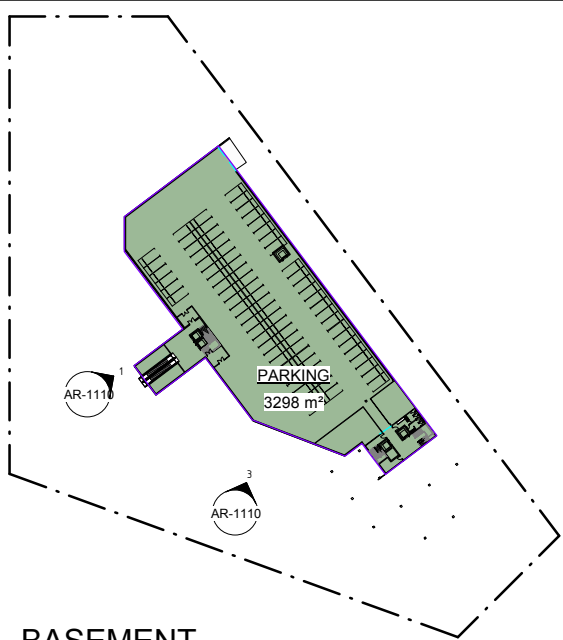
DISCIPLINE
ARCHITECTURE

PROJECT
**PROPOSED MWINYI MALL
ZANZIBAR**

ADDRESS
ZANZIBAR

ISSUE
FEASIBILITY
DATE
15 FEBRUARY 2021





SITE AREA	
13843 m ²	

PARKING SPACES	
LEVEL	SPACES

BASEMENT	79
GROUND	123
LEVEL 1	3
TOTAL PARKING: 205	

COMMERCIAL GFA		
Level	Name	Area

GROUND	COMMERCIAL	268 m ²
LEVEL 1	COMMERCIAL	773 m ²
LEVEL2	COMMERCIAL	775 m ²
LEVEL3	COMMERCIAL	2543 m ²
LEVEL4	COMMERCIAL	776 m ²
LEVEL5	COMMERCIAL	113 m ²
TOTAL: 8		5248 m²

RETAIL GFA		
Level	Name	Area

GROUND	RETAIL	4857 m ²
LEVEL 1	RETAIL	4919 m ²
LEVEL2	RETAIL	2984 m ²
TOTAL: 6		12759 m²

SERVICE GFA		
Level	Name	Area

GROUND	SERVICE AREA	202 m ²
TOTAL: 2		202 m²

ARCHITECTURAL LEGEND

- GFA - GROSS FLOOR AREA
- NLA - NET LETTABLE AREA
- C/L - CENTER LINE
- C/S - SPACING CENTERS
- FFL - FINISH FLOOR LEVEL
- SSL - STRUCTURAL SLAB LEVEL
- EXL - EXISTING LEVEL
- RC - REINFORCED CONCRETE

NOTES

1. DO NOT SCALE FROM THIS DRAWING.
2. ALL MEASUREMENTS ARE IN MILLIMETERS UNLESS STATED OTHERWISE.
3. THIS DRAWING IS TO BE READ IN CONJUNCTION WITH THE SPECIFICATION AND ALL RELEVANT ARCHITECTURAL, ELECTRICAL, MECHANICAL AND STRUCTURAL DRAWINGS.
4. THIS DRAWING IS COPYRIGHT AND REMAINS THE PROPERTY OF ESTIM CONSTRUCTION CO. LTD.
5. THIS DRAWING SHOULD NOT BE USED FOR CONSTRUCTION PURPOSES UNLESS IT IS APPROVED BY THE ARCHITECTS OR RELEVANT CONSULTANTS.
6. SFL - STRUCTURAL FLOOR LEVEL. FFL APPROX 50 ABOVE SFL DEPENDING ON FINISH

PARKING GFA		
Level	Name	Area

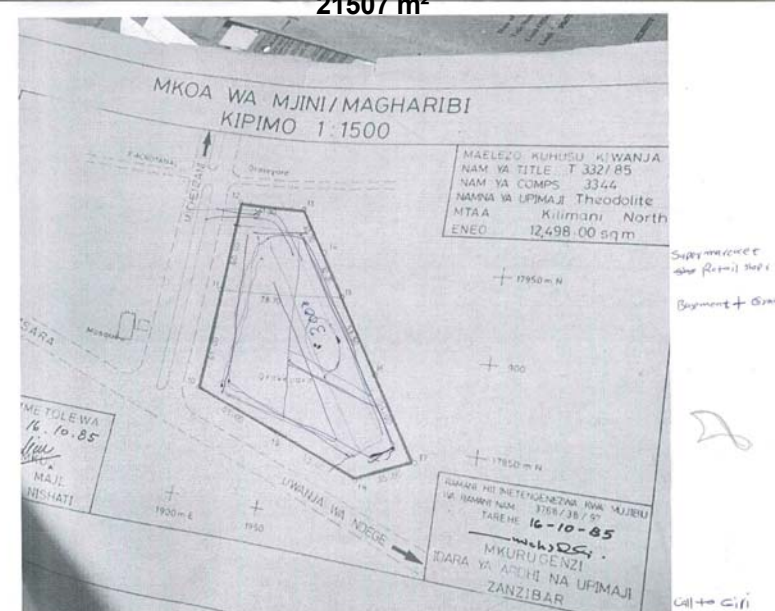
Not Placed	PARKING	0 m ²
BASEMENT	PARKING	3298 m ²
TOTAL: 2		3298 m²

GFA GROSS FLOOR AREA		
Level	Name	Area

Not Placed	CIRCULATION	0 m ²
GROUND	COMMERCIAL	268 m ²
GROUND	RETAIL	4857 m ²
GROUND	SERVICE AREA	202 m ²
LEVEL 1	COMMERCIAL	773 m ²
LEVEL 1	RETAIL	4919 m ²
LEVEL2	COMMERCIAL	775 m ²
LEVEL2	RETAIL	2984 m ²
LEVEL3	COMMERCIAL	2543 m ²
LEVEL4	COMMERCIAL	776 m ²
LEVEL5	COMMERCIAL	113 m ²
TOTAL: 17		18209 m²

GRAND TOTAL GFA	
Area	

21507 m ²
21507 m ²



C	FEASIBILITY 2	12-12-2020	GF
B	FEASIBILITY 1	08-12-2020	GF
A	PRELIMINARY ISSUE	02-11-2020	GF
Rev	Modifications	Date	Drawn by
Revisions	Checked by	GF	

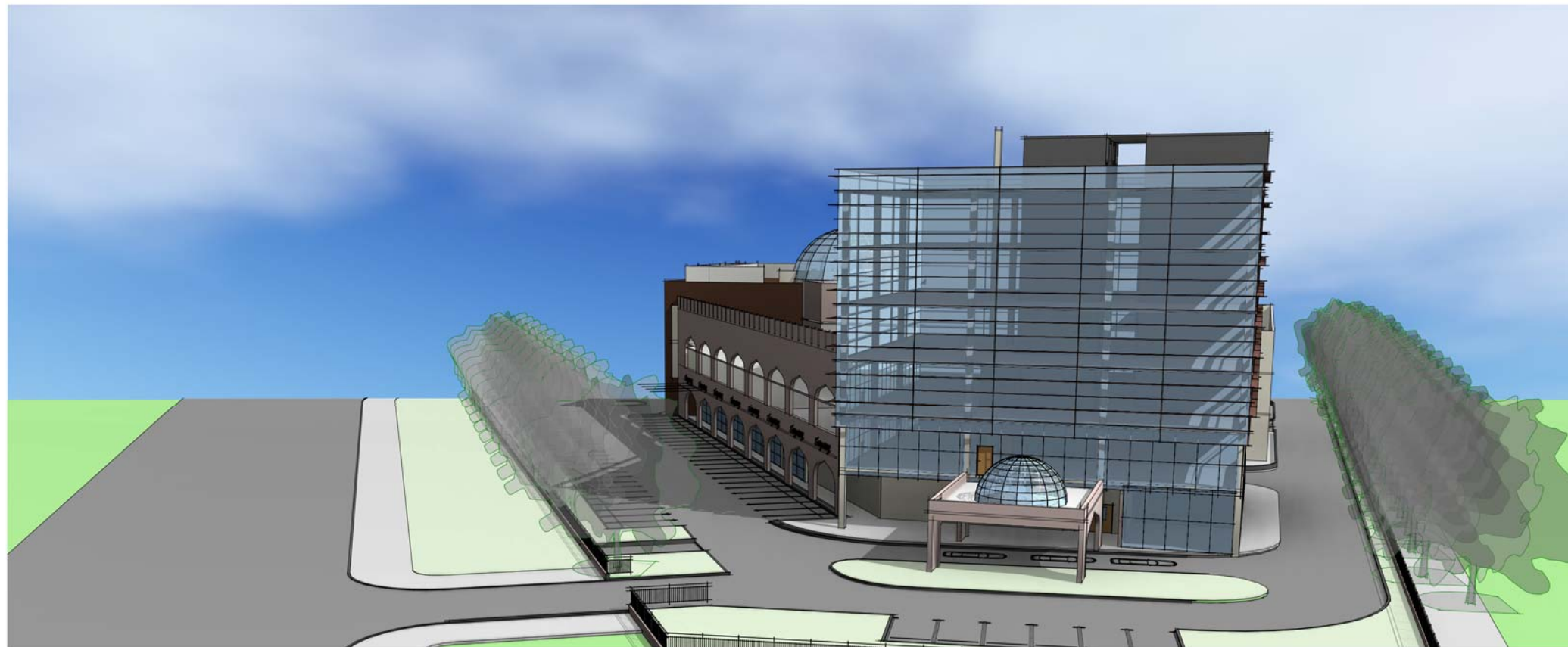
Status	FEASIBILITY
--------	--------------------

Client	ABDULLAH MWINYI
Project	MWINYI MALL ZANZIBAR

Drawing	PROJECT DATA
Project No.	-
Scale	As indicated
Original Size	A1
Drawing No.	AR-0003
Revision	C

NOTES

1. DO NOT SCALE FROM THIS DRAWING.
2. ALL MEASUREMENTS ARE IN MILLIMETERS UNLESS STATED OTHERWISE.
3. THIS DRAWING IS TO BE READ IN CONJUNCTION WITH THE SPECIFICATION AND ALL RELEVANT ARCHITECTURAL, ELECTRICAL, MECHANICAL AND STRUCTURAL DRAWINGS.
4. THIS DRAWING IS COPYRIGHT AND REMAINS THE PROPERTY OF ESTIM CONSTRUCTION CO. LTD.
5. THIS DRAWING SHOULD NOT BE USED FOR CONSTRUCTION PURPOSES UNLESS IT IS APPROVED BY THE ARCHITECTS OR RELEVANT CONSULTANTS.
6. SFL - STRUCTURAL FLOOR LEVEL. FFL APPROX 50 ABOVE SFL DEPENDING ON FINISH



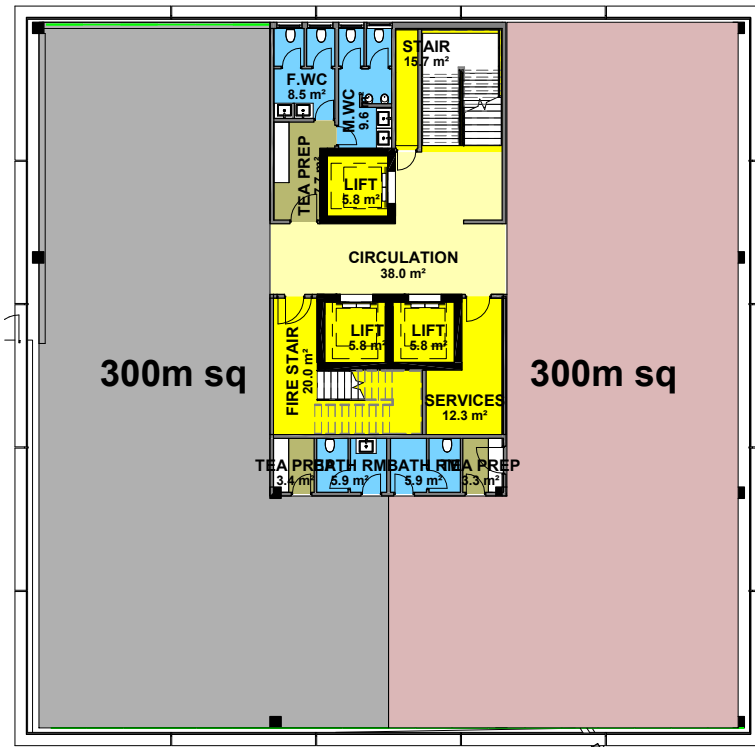
C	FEASIBILITY 2	12-12-2020	GF
B	FEASIBILITY 1	08-12-2020	GF
A	PRELIMINARY ISSUE	02-11-2020	GF
Rev	Modifications	Date	Drawn by

Revisions	Checked by	GF
Status	FEASIBILITY	

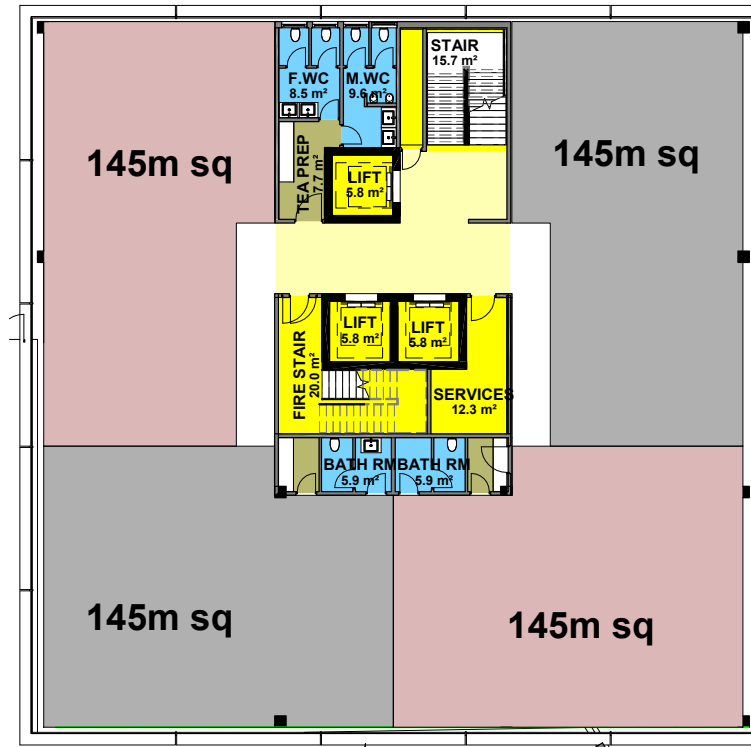
Client ABDULLAH MWINYI		
Project MWINYI MALL ZANZIBAR		
Drawing 3D GRAPHICS		
Project No. -	Scale	Original Size A1
Drawing No. AR-0004	Revision C	
File path C:\Users\Greg\Documents\Retail_Greg.rvt		Plot Time 2/10/2021 10:11:31 AM

NOTES

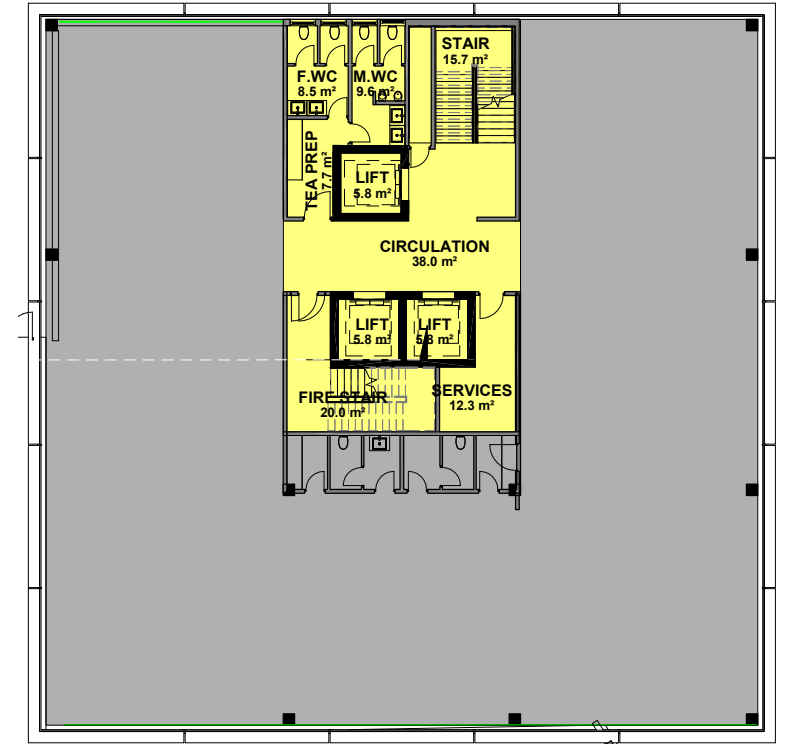
1. DO NOT SCALE FROM THIS DRAWING.
2. ALL MEASUREMENTS ARE IN MILLIMETERS UNLESS STATED OTHERWISE.
3. THIS DRAWING IS TO BE READ IN CONJUNCTION WITH THE SPECIFICATION AND ALL RELEVANT ARCHITECTURAL, ELECTRICAL, MECHANICAL AND STRUCTURAL DRAWINGS.
4. THIS DRAWING IS COPYRIGHT AND REMAINS THE PROPERTY OF ESTIM CONSTRUCTION CO. LTD.
5. THIS DRAWING SHOULD NOT BE USED FOR CONSTRUCTION PURPOSES UNLESS IT IS APPROVED BY THE ARCHITECTS OR RELEVANT CONSULTANTS.
6. SFL - STRUCTURAL FLOOR LEVEL. FFL APPROX 50 ABOVE SFL DEPENDING ON FINISH



2 TENANTS
AR-1108 1:150



4 TENANTS
AR-1108 1:150

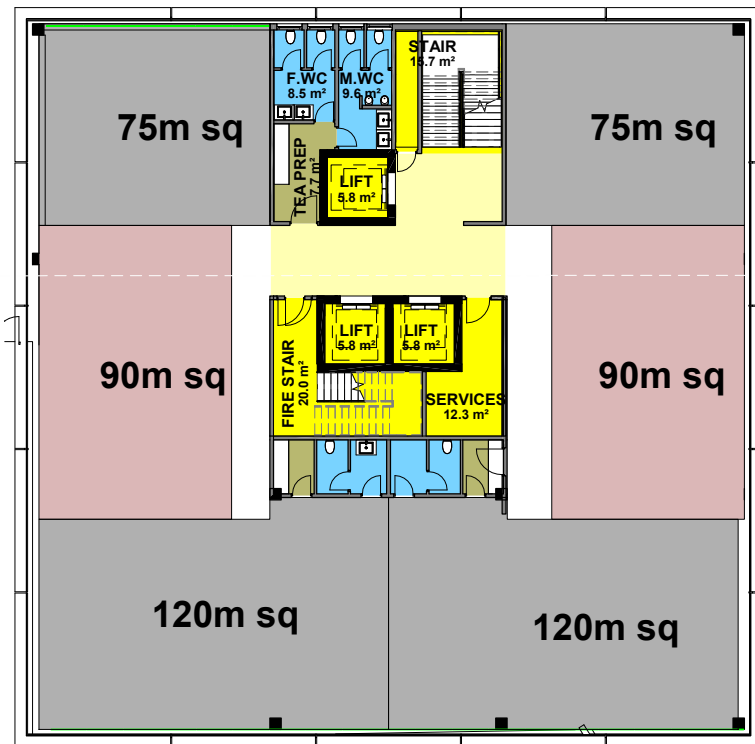


5 TYPICAL FLOOR
AR-1108 1:150

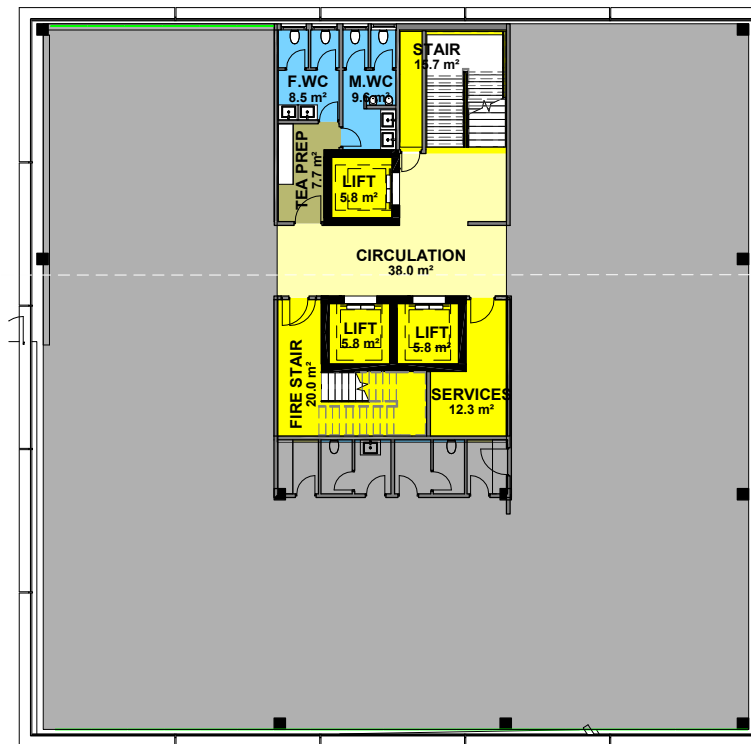
TOTAL FLOOR GFA -	790m ²
TOTAL CORE GFA -	155m ²
TOTAL FLOOR NLA -	635m ²
EFFICIENCY -	80%

C	FEASIBILITY 2	12-12-2020	GF
B	FEASIBILITY 1	08-12-2020	GF
A	PRELIMINARY ISSUE	02-11-2020	GF
Rev	Modifications	Date	Drawn by

Revisions	Checked by	GF
Status	FEASIBILITY	



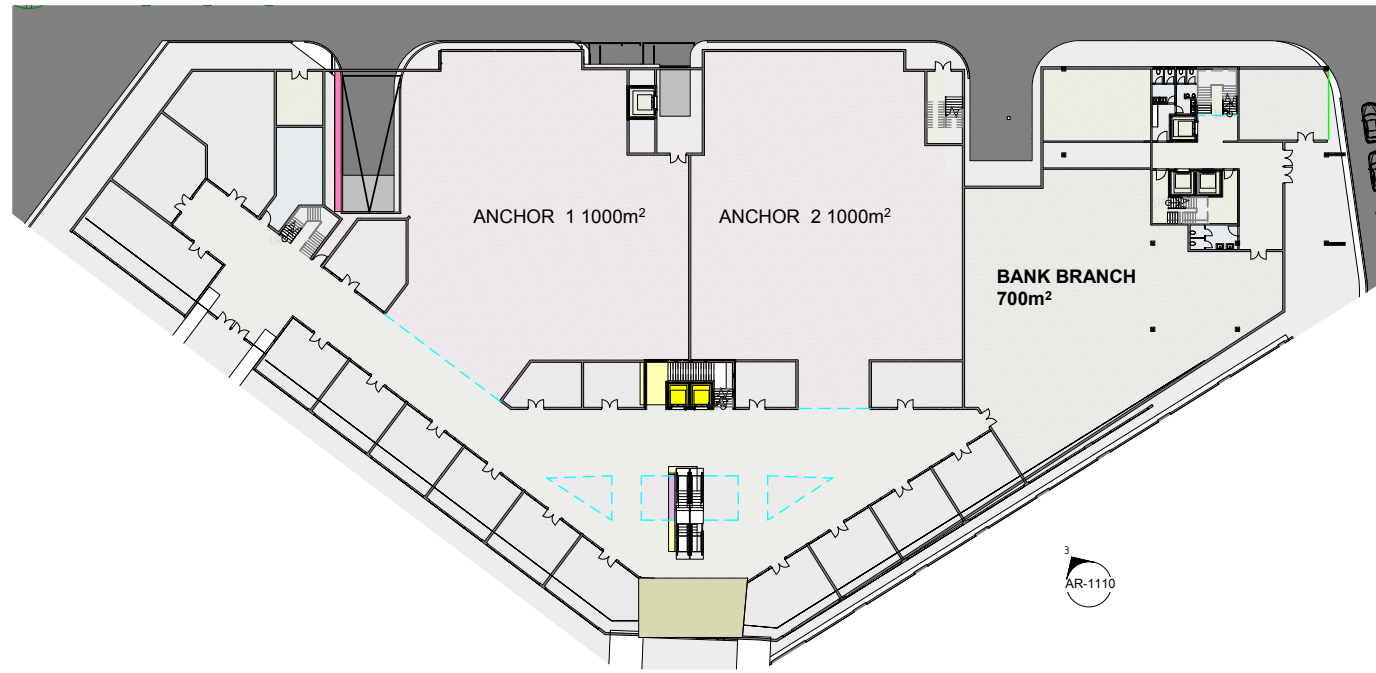
6 TENANTS
AR-1108 1:150



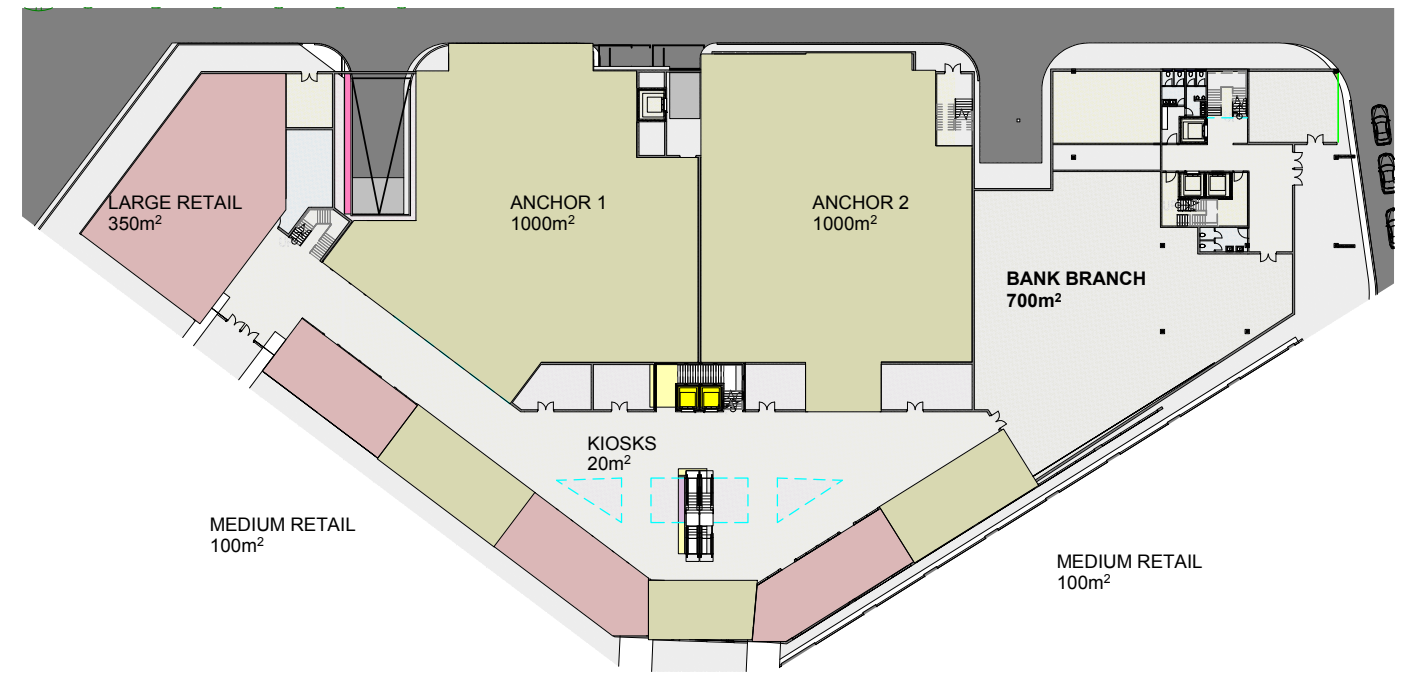
1 TENANT
AR-1108 1:150



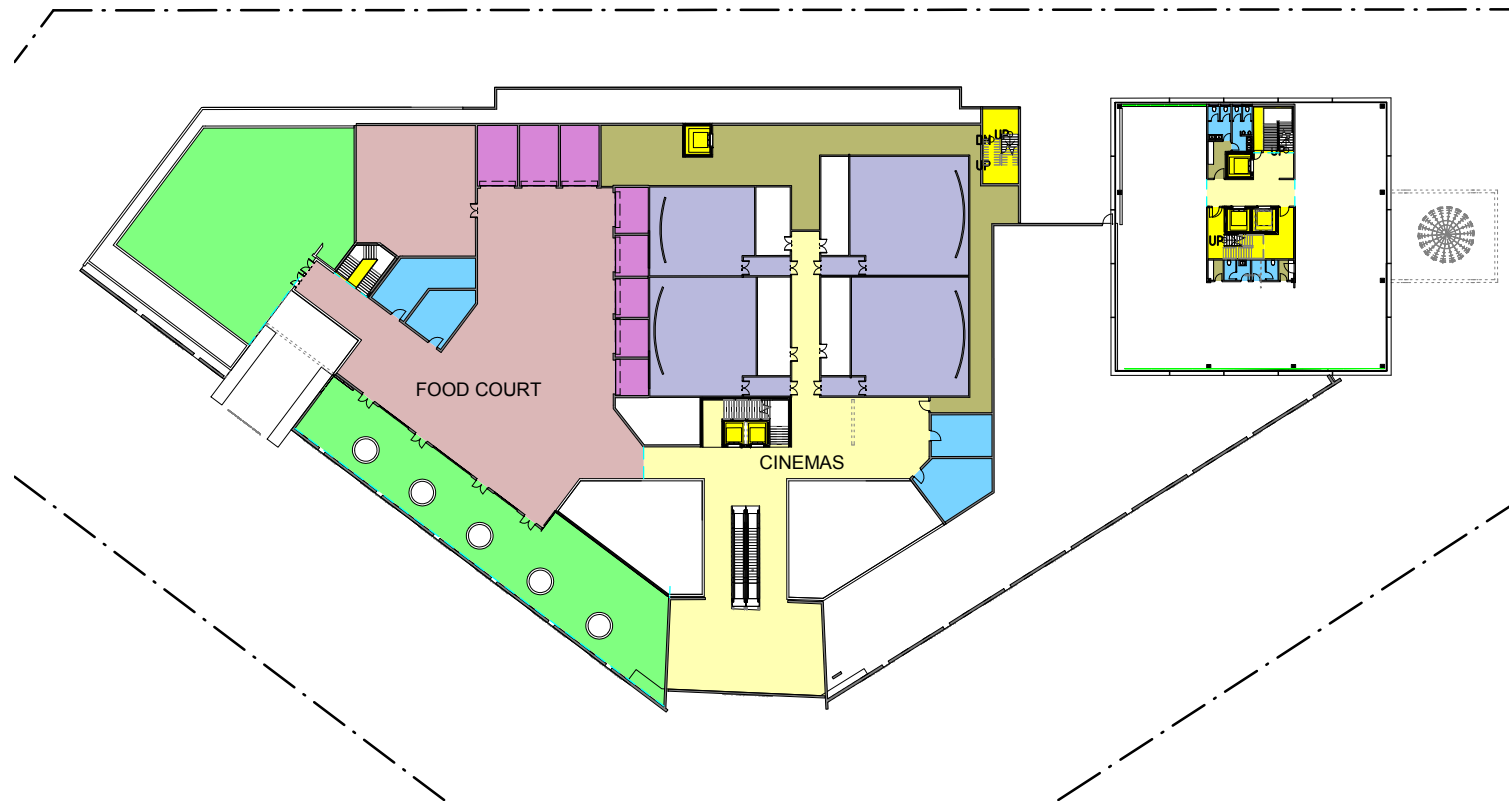
Client	ABDULLAH MWINYI		
Project	MWINYI MALL ZANZIBAR		
Drawing	TENNANTS		
Project No.	Scale	Original Size	
-	1:150	A1	
Drawing No.	Revision	C	
AR-0005			
File path	Plot Time		
C:\Users\Greg\Documents\Retail_Greg.rvt	21/02/2021 10:11:34 AM		



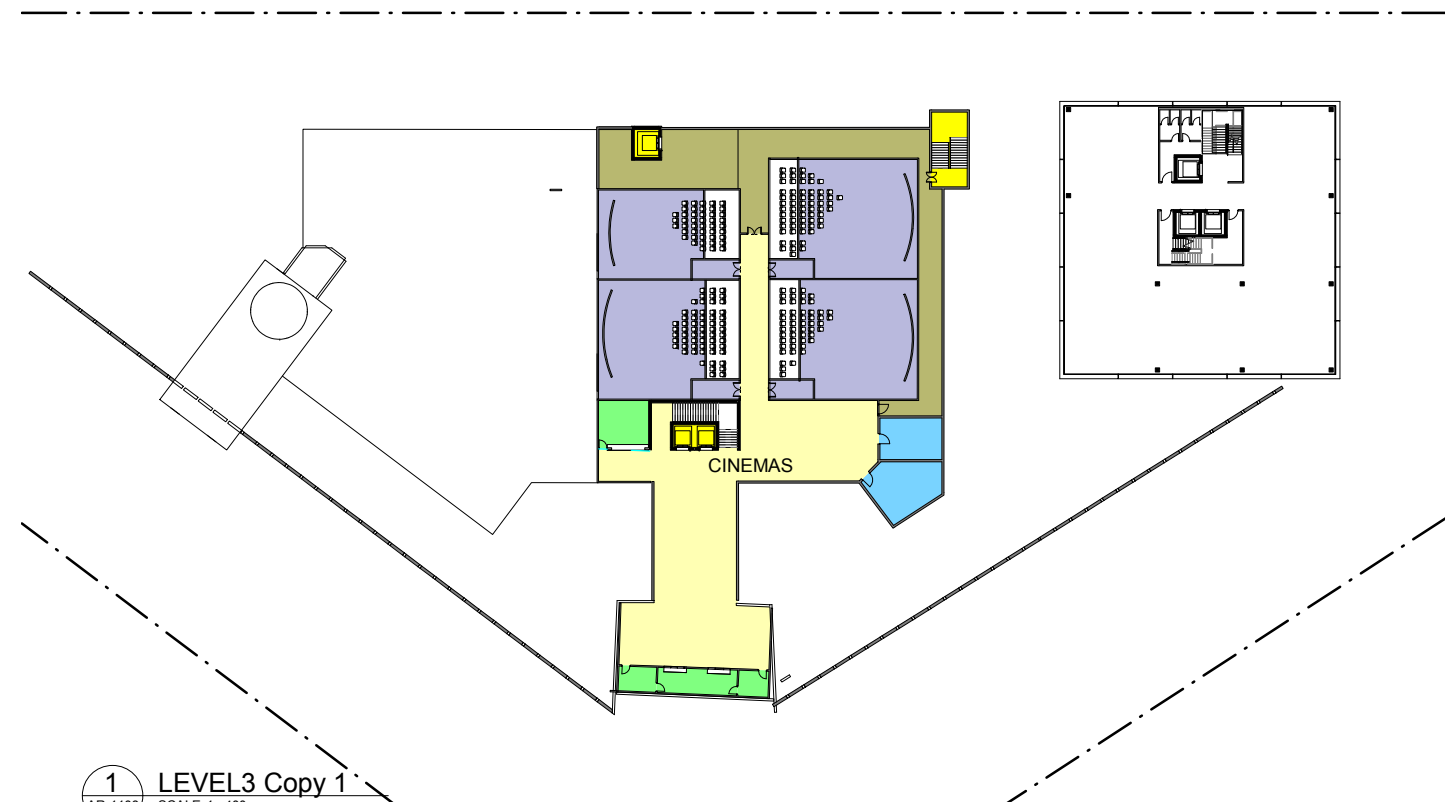
3 RETAIL TENENTS GROUND FL
AR-1108 1: 400



2 RETAIL TENENTS LEVEL 1
AR-1108 1: 400



4 RETAIL TENANTS LEVEL 2
AR-1108 SCALE 1 : 400



1 LEVEL3 Copy 1
AR-1108 SCALE 1 : 400

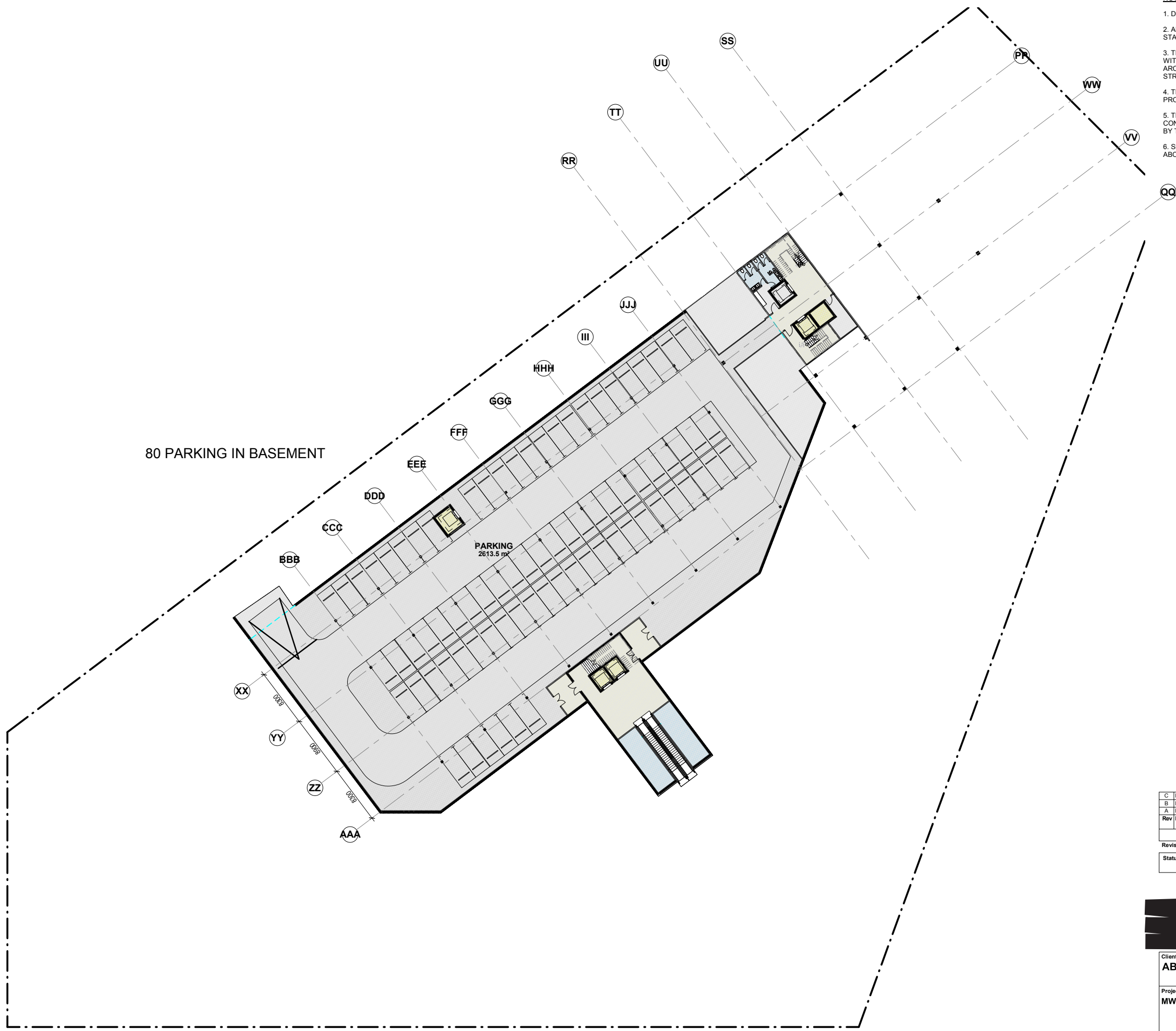
Rev	Modifications	Date	Dr by
C	FEASIBILITY 2	12-12-2020	GF
B	FEASIBILITY 1	08-12-2020	GF
A	PRELIMINARY ISSUE	02-11-2020	GF

Revisions	Checked by	RMH
Date Originated	12/08/20	
Status	FEASIBILITY	

Client	Project	Drawing	Project No.	Scale	Original Size
ABDULLAH MWINYI	MWINYI MALL ZANZIBAR	RETAIL TENANTS	-	1 : 400	A1
			Drawing No.	Revision	
			AR-0006	C	

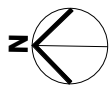
NOTES

1. DO NOT SCALE FROM THIS DRAWING.
2. ALL MEASUREMENTS ARE IN MILLIMETERS UNLESS STATED OTHERWISE.
3. THIS DRAWING IS TO BE READ IN CONJUNCTION WITH THE SPECIFICATION AND ALL RELEVANT ARCHITECTURAL, ELECTRICAL, MECHANICAL AND STRUCTURAL DRAWINGS.
4. THIS DRAWING IS COPYRIGHT AND REMAINS THE PROPERTY OF ESTIM CONSTRUCTION CO. LTD.
5. THIS DRAWING SHOULD NOT BE USED FOR CONSTRUCTION PURPOSES UNLESS IT IS APPROVED BY THE ARCHITECTS OR RELEVANT CONSULTANTS.
6. SFL - STRUCTURAL FLOOR LEVEL. FFL APPROX 50 ABOVE SFL DEPENDING ON FINISH



80 PARKING IN BASEMENT

PARKING
2613.5 m²



C	FEASIBILITY 2	12-12-2020	GF
B	FEASIBILITY 1	08-12-2020	GF
A	PRELIMINARY ISSUE	02-11-2020	GF
Rev	Modifications	Date	Drawn by

Revisions	Checked by	GF
Status	FEASIBILITY	

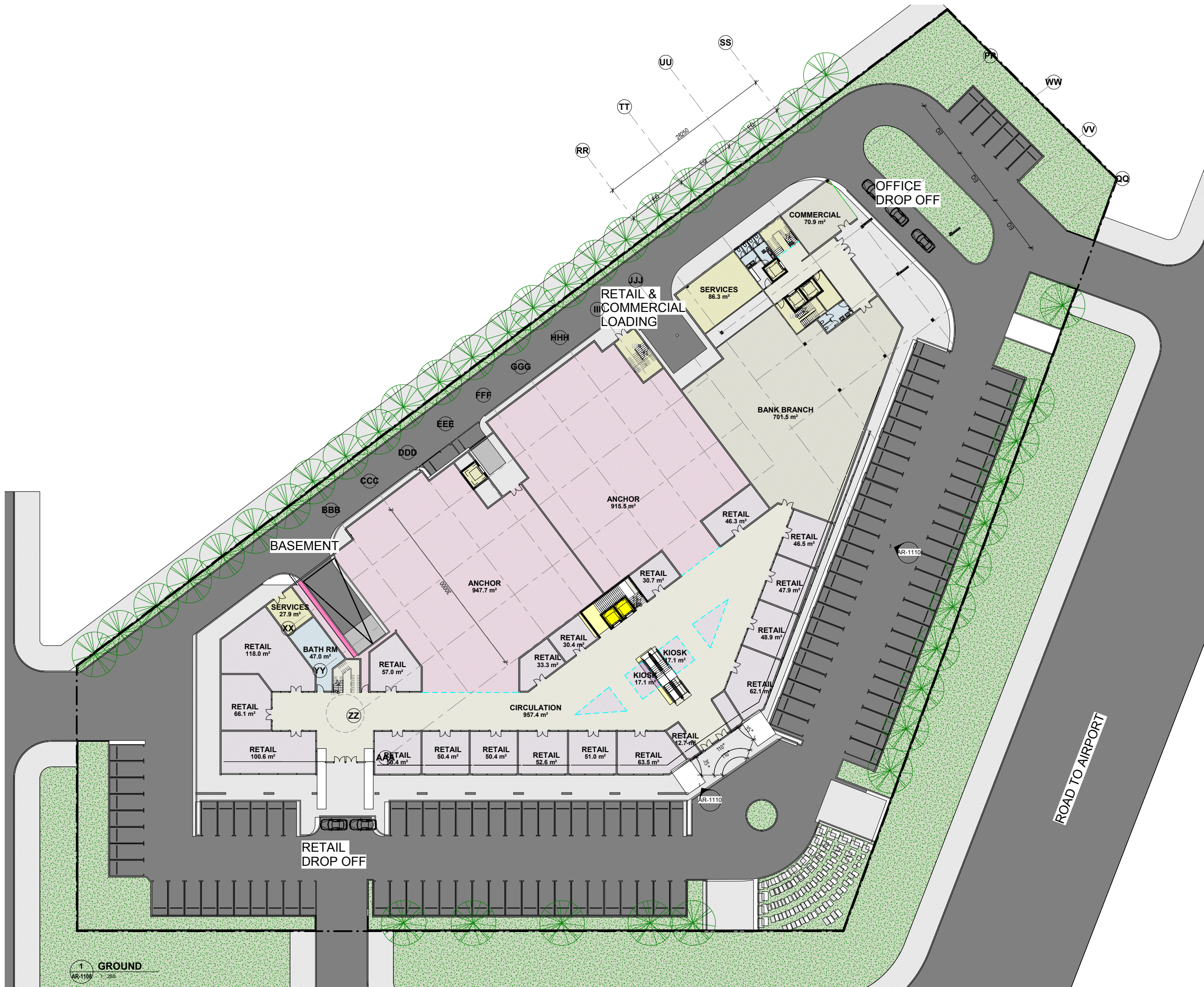


Client ABDULLAH MWINYI		
Project MWINYI MALL ZANZIBAR		
Drawing BASEMENT		
Project No.	Scale	Original Size
-	1 : 280	A1
Drawing No.	Revision	
AR-1101	C	
File path C:\Users\Greg\Documents\Retail_Greg.rvt		Plot Time 21/12/2021 10:12:23 AM

1 BASEMENT
AR-1101 1:280

NOTES

1. DO NOT SCALE FROM THIS DRAWING.
2. ALL MEASUREMENTS ARE IN MILLIMETERS UNLESS STATED OTHERWISE.
3. THIS DRAWING IS TO BE READ IN CONJUNCTION WITH THE SPECIFICATION AND ALL RELEVANT ARCHITECTURAL, ELECTRICAL, MECHANICAL AND STRUCTURAL DRAWINGS.
4. THIS DRAWING IS COPYRIGHT AND REMAINS THE PROPERTY OF ESTIM CONSTRUCTION CO. LTD.
5. THIS DRAWING SHOULD NOT BE USED FOR CONSTRUCTION PURPOSES UNLESS IT IS APPROVED BY THE ARCHITECTS OR RELEVANT CONSULTANTS.
6. SFL - STRUCTURAL FLOOR LEVEL. FFL APPROX 50 ABOVE SFL DEPENDING ON FINISH



C	FEASIBILITY 2	12-12-2020	GF
B	FEASIBILITY 1	08-12-2020	GF
A	PRELIMINARY ISSUE	02-11-2020	GF
Rev	Modifications	Date	Drawn by

Revisions	Checked by	GF
Status	FEASIBILITY	



Client
ABDULLAH MWINYI

Project
MWINYI MALL ZANZIBAR

Drawing
GROUND FLOOR GA PLAN

Project No.	Scale	Original Size
-	1 : 280	A1
Drawing No.	Revision	
AR-1102	C	

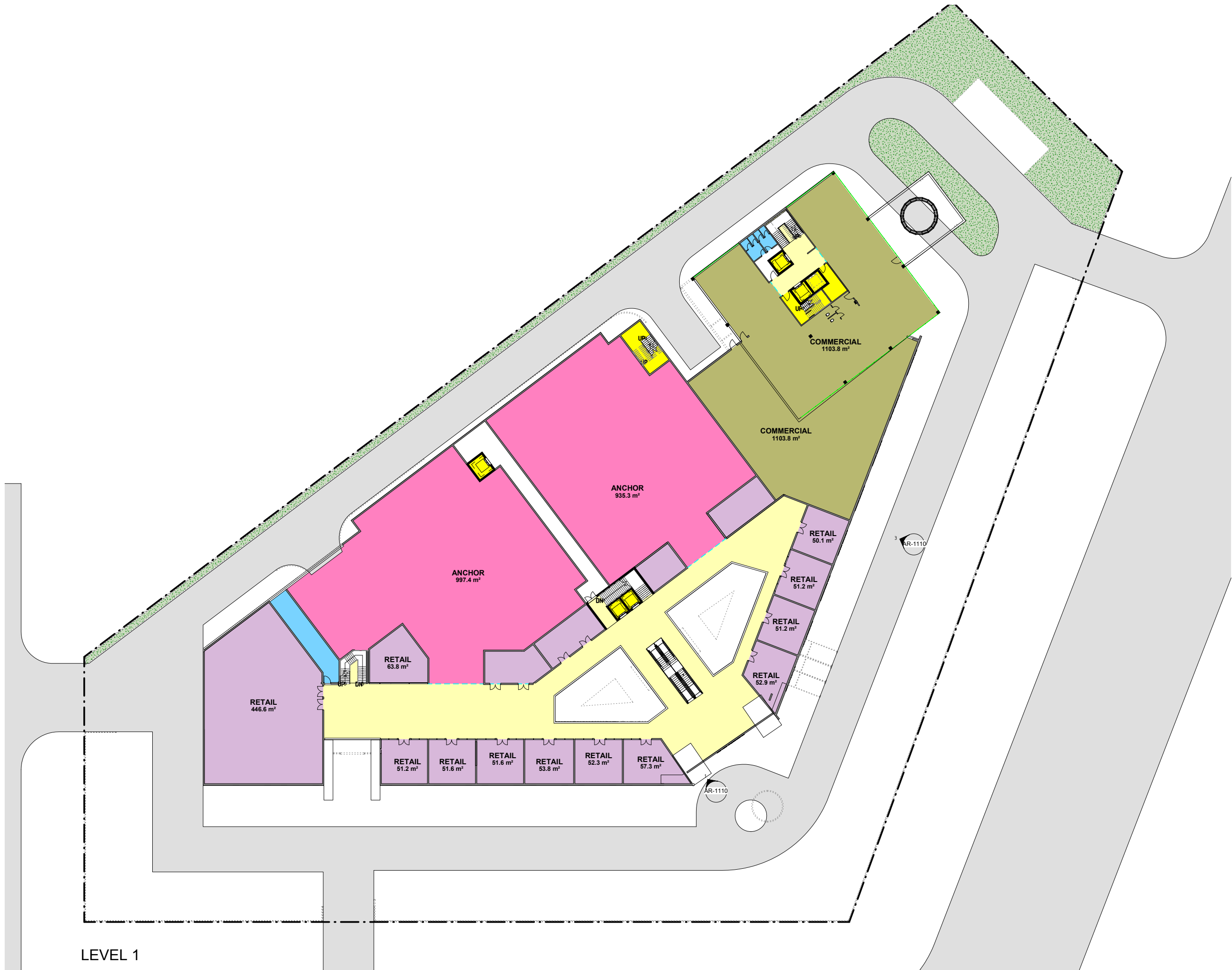
1 GROUND
AR-1102 1:280

NOTES

1. DO NOT SCALE FROM THIS DRAWING.
2. ALL MEASUREMENTS ARE IN MILLIMETERS UNLESS STATED OTHERWISE.
3. THIS DRAWING IS TO BE READ IN CONJUNCTION WITH THE SPECIFICATION AND ALL RELEVANT ARCHITECTURAL, ELECTRICAL, MECHANICAL AND STRUCTURAL DRAWINGS.
4. THIS DRAWING IS COPYRIGHT AND REMAINS THE PROPERTY OF ESTIM CONSTRUCTION CO. LTD.
5. THIS DRAWING SHOULD NOT BE USED FOR CONSTRUCTION PURPOSES UNLESS IT IS APPROVED BY THE ARCHITECTS OR RELEVANT CONSULTANTS.
6. SFL - STRUCTURAL FLOOR LEVEL. FFL APPROX 50 ABOVE SFL DEPENDING ON FINISH

WALL TYPES
REFER WALL TYPE DRAWINGS FOR ADDITIONAL INFORMATION ON WALL TYPES.

	W1.1 - 150 WIDE SOLID CONCRETE BLOCKWORK TO BE PLASTERED & PAINTED
	W1.2 - 150 WIDE HOLLOW CONCRETE BLOCKWORK
	W1.3 - 230 WIDE SOLID CONCRETE BLOCKWORK (EXTERNAL WALLS)
	W1.4 - 230 THICK HOLLOW CONCRETE BLOCKWORK
	W1.5 - 100 THICK SOLID CONCRETE BLOCKWORK. 2100 HIGH IN WC CUBICLES
	W1.6 - 200 WIDE REINFORCED CONCRETE WALLS (LIFT / RETAINING WALL)
	W1.7 - 300 THICK REINFORCED CONCRETE RETAINING WALL
	W1.8 - 300 THICK REINFORCED CONCRETE RETAINING WALL
	FRAMED GLAZED PARTITION
	FRAMELESS GLASS WITH GLASS FINIS
	SETOUT POINT



LEVEL 1

C	FEASIBILITY 2	12-12-2020	GF
B	FEASIBILITY 1	08-12-2020	GF
A	PRELIMINARY ISSUE	02-11-2020	GF
Rev	Modifications	Date	Drawn by

Revisions	Checked by	GF
Status	FEASIBILITY	



Client
ABDULLAH MWINYI

Project
MWINYI MALL ZANZIBAR

Drawing
LEVEL 1 GA PLAN

Project No.	Scale	Original Size
-	As indicated	A1
Drawing No.	Revision	
AR-1103	C	

NOTES

1. DO NOT SCALE FROM THIS DRAWING.
2. ALL MEASUREMENTS ARE IN MILLIMETERS UNLESS STATED OTHERWISE.
3. THIS DRAWING IS TO BE READ IN CONJUNCTION WITH THE SPECIFICATION AND ALL RELEVANT ARCHITECTURAL, ELECTRICAL, MECHANICAL AND STRUCTURAL DRAWINGS.
4. THIS DRAWINGS IS COPYRIGHT AND REMAINS THE PROPERTY OF ESTIM CONSTRUCTION CO. LTD.
5. THIS DRAWING SHOULD NOT BE USED FOR CONSTRUCTION PURPOSES UNLESS IT IS APPROVED BY THE ARCHITECTS OR RELEVANT CONSULTANTS.
6. SFL - STRUCTURAL FLOOR LEVEL. FFL APPROX 50 ABOVE SFL DEPENDING ON FINISH

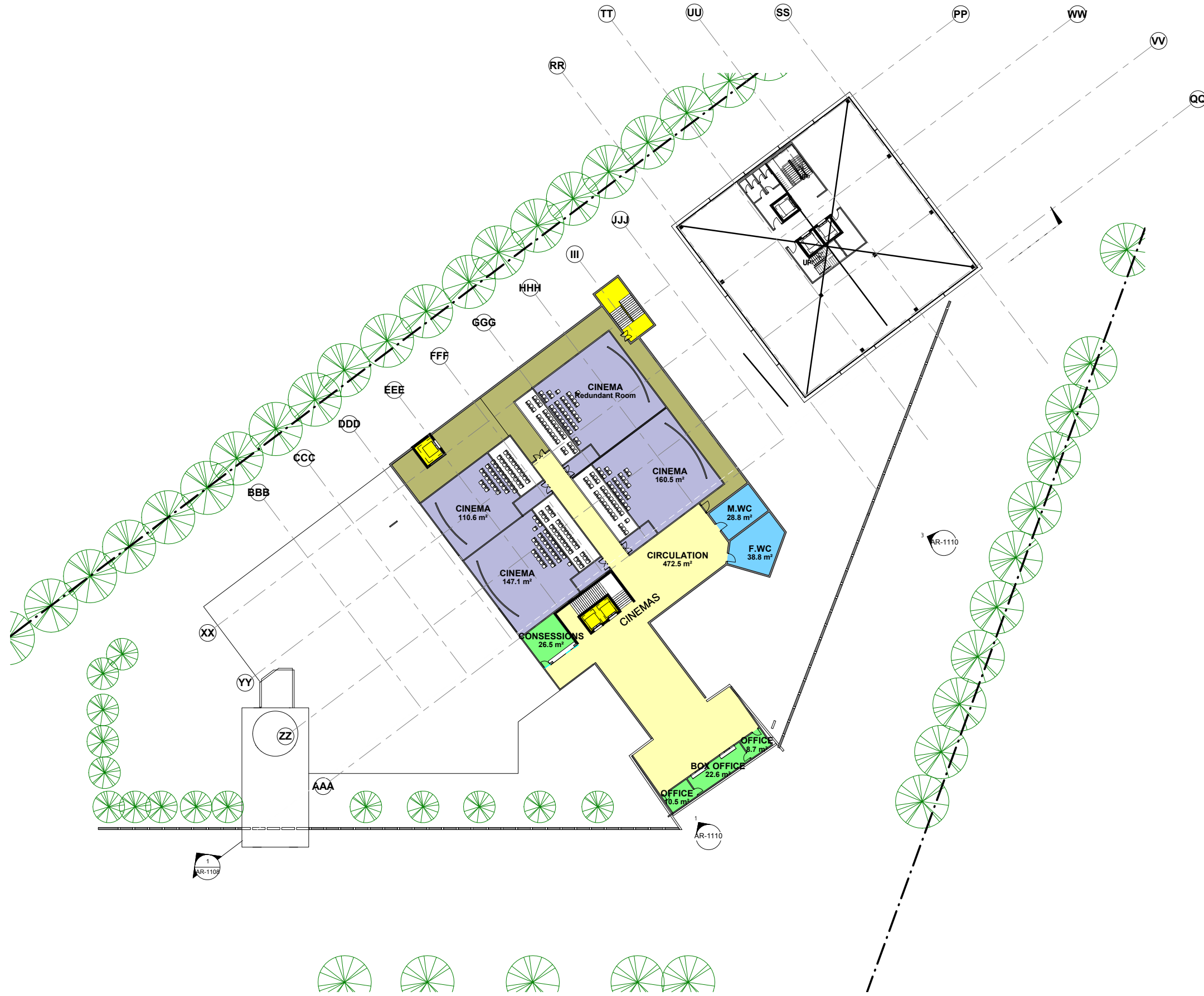


C	FEASIBILITY 2	12-12-2020	GF
B	FEASIBILITY 1	08-12-2020	GF
A	PRELIMINARY ISSUE	02-11-2020	GF
Rev	Modifications	Date	Drawn by

Revisions	Checked by	GF
Status	FEASIBILITY	

Client ABDULLAH MWINYI		
Project MWINYI MALL ZANZIBAR		
Drawing LEVEL 2		
Project No.	Scale	Original Size
-	1 : 280	A1
Drawing No.	Revision	
AR-1104	C	
File path C:\Users\Greg\Documents\Retail_Greg.rvt		Plot Time 21/12/2021 10:13:30 AM

LEVEL2



- NOTES**
1. DO NOT SCALE FROM THIS DRAWING.
 2. ALL MEASUREMENTS ARE IN MILLIMETERS UNLESS STATED OTHERWISE.
 3. THIS DRAWING IS TO BE READ IN CONJUNCTION WITH THE SPECIFICATION AND ALL RELEVANT ARCHITECTURAL, ELECTRICAL, MECHANICAL AND STRUCTURAL DRAWINGS.
 4. THIS DRAWING IS COPYRIGHT AND REMAINS THE PROPERTY OF ESTIM CONSTRUCTION CO. LTD.
 5. THIS DRAWING SHOULD NOT BE USED FOR CONSTRUCTION PURPOSES UNLESS IT IS APPROVED BY THE ARCHITECTS OR RELEVANT CONSULTANTS.
 6. SFL - STRUCTURAL FLOOR LEVEL. FFL APPROX 50 ABOVE SFL DEPENDING ON FINISH

Rev	Modifications	Date	Drawn by
	Revisions	Checked by	GF

Status
FEASABILITY

Client
ABDULLAH MWINYI

Project
MWINYI MALL ZANZIBAR

Drawing
LEVEL 3

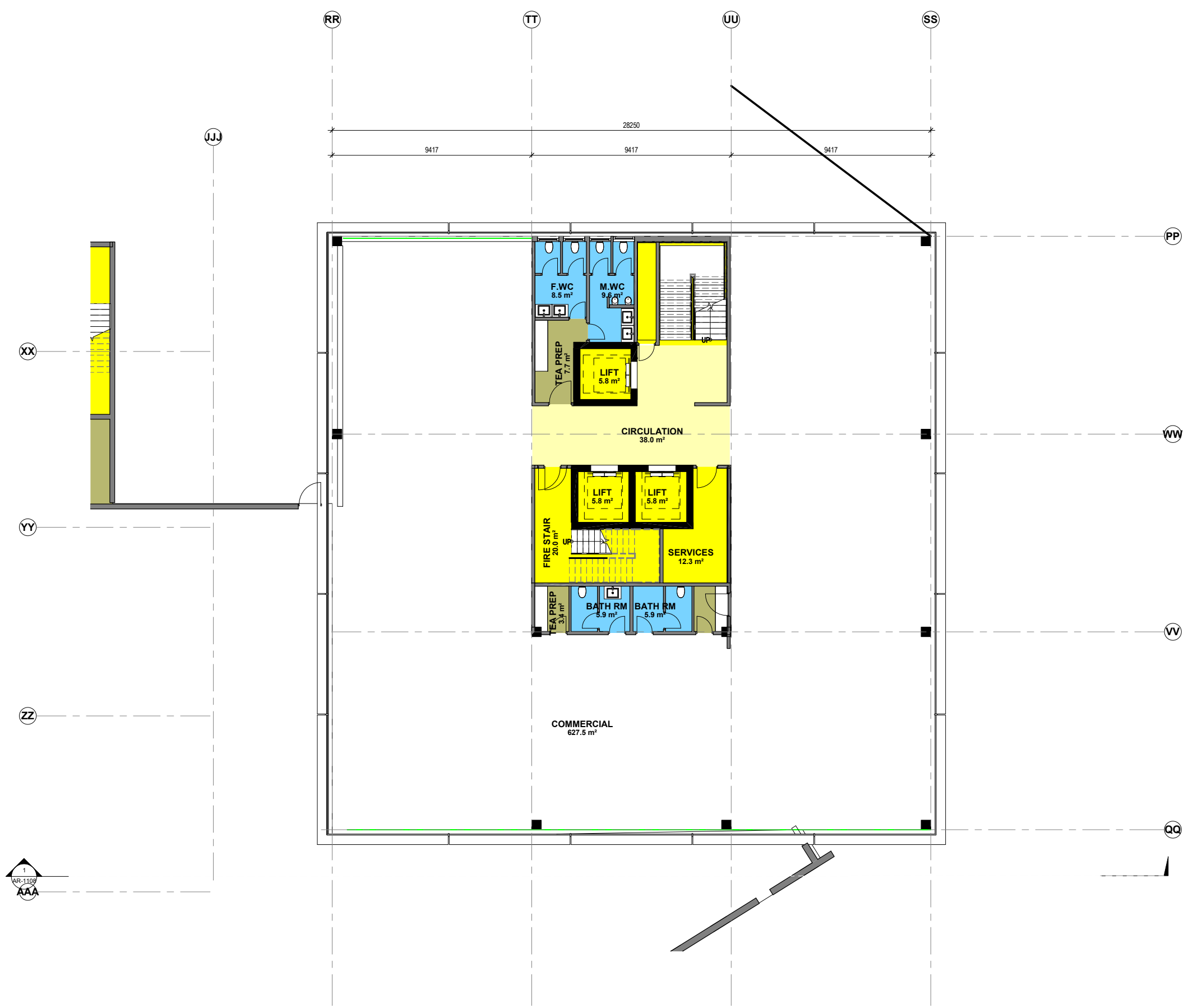
Project No.
-

Scale
1 : 280

Original Size
A1

Drawing No.
AR-1105

Revision



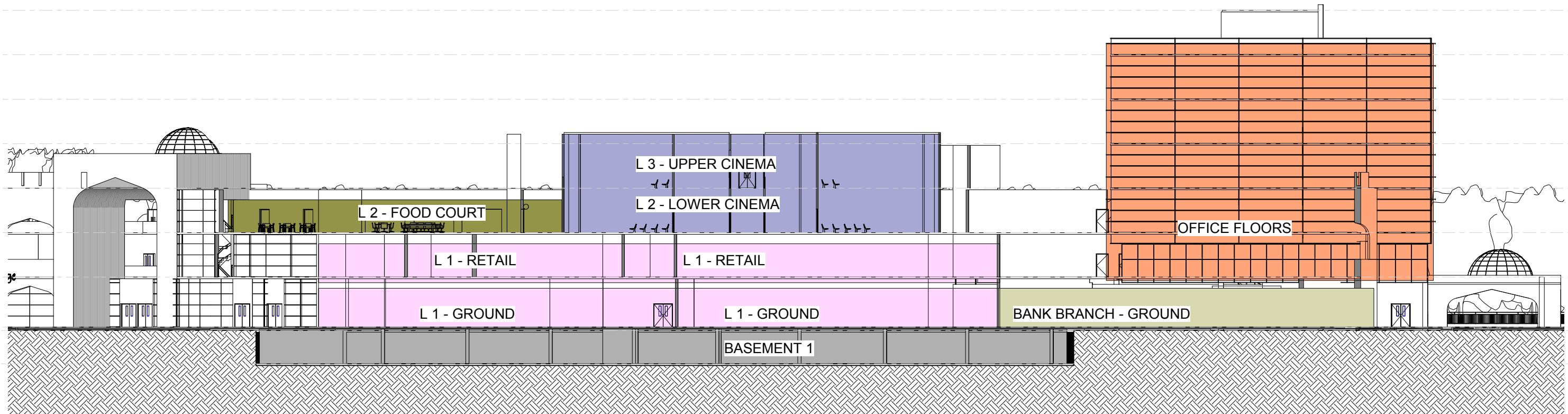
1 LEVEL2 TYPICAL OFFICE
AR-1106 1:100

C	FEASIBILITY 2	12-12-2020	GF
B	FEASIBILITY 1	08-12-2020	GF
A	PRELIMINARY ISSUE	02-11-2020	GF
Rev	Modifications	Date	Dr by
Revisions	Checked by	RMH	

Date Originated	12/07/20	Client	ABDULLAH MWINYI	Project	MWINYI MALL ZANZIBAR	Drawing	TYPICAL OFFICE FLOOR	Project No.	-	Scale	1 : 100	Original Size	A1
Status	FEASIBILITY							Drawing No.	AR-1106			Revision	C

NOTES

1. DO NOT SCALE FROM THIS DRAWING.
2. ALL MEASUREMENTS ARE IN MILLIMETERS UNLESS STATED OTHERWISE.
3. THIS DRAWING IS TO BE READ IN CONJUNCTION WITH THE SPECIFICATION AND ALL RELEVANT ARCHITECTURAL, ELECTRICAL, MECHANICAL AND STRUCTURAL DRAWINGS.
4. THIS DRAWING IS COPYRIGHT AND REMAINS THE PROPERTY OF ESTIM CONSTRUCTION CO. LTD.
5. THIS DRAWING SHOULD NOT BE USED FOR CONSTRUCTION PURPOSES UNLESS IT IS APPROVED BY THE ARCHITECTS OR RELEVANT CONSULTANTS.
6. SFL - STRUCTURAL FLOOR LEVEL. FFL APPROX 50 ABOVE SFL DEPENDING ON FINISH



- LEVEL FFL 28.8
- LEVEL FFL 24.8
- LEVEL FFL 20.8
- LEVEL FFL 16.8
- LEVEL FFL 12.8
- LEVEL FFL 8.8
- LEVEL FFL 4.8
- SITE P FFL 0.00
- BASE FFL -3.0

1 Section 33
AR-0005 SCALE 1 : 180

Rev/Modifications	Date	Drawn by
Revisions	Checked by	GF

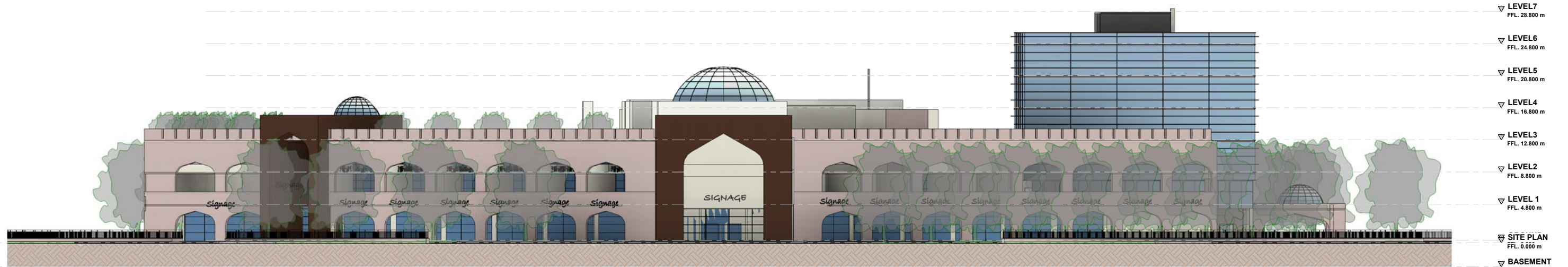
Status
FEASABILITY

Client
ABDULLAH MWINYI

Project
MWINYI MALL ZANZIBAR

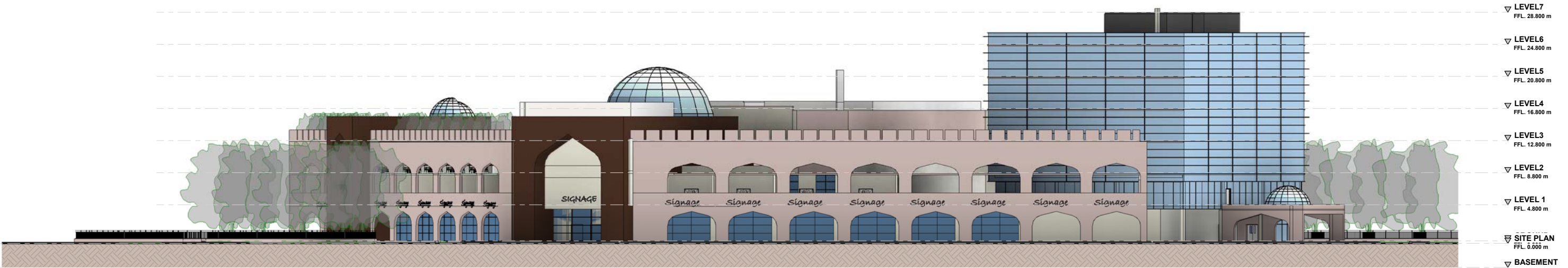
Drawing
USE SECTION

Project No.	Scale	Original Size
-	1 : 180	A1
Drawing No.	Revision	
AR-1108		



- ▽ LEVEL7
FFL 28.800 m
- ▽ LEVEL6
FFL 24.800 m
- ▽ LEVEL5
FFL 20.800 m
- ▽ LEVEL4
FFL 16.800 m
- ▽ LEVEL3
FFL 12.800 m
- ▽ LEVEL2
FFL 8.800 m
- ▽ LEVEL 1
FFL 4.800 m
- ▽ SITE PLAN
FFL 0.000 m
- ▽ BASEMENT
FFL -3.000 m

1 Elevation 4 - a
AR-0003 1:250



- ▽ LEVEL7
FFL 28.800 m
- ▽ LEVEL6
FFL 24.800 m
- ▽ LEVEL5
FFL 20.800 m
- ▽ LEVEL4
FFL 16.800 m
- ▽ LEVEL3
FFL 12.800 m
- ▽ LEVEL2
FFL 8.800 m
- ▽ LEVEL 1
FFL 4.800 m
- ▽ SITE PLAN
FFL 0.000 m
- ▽ BASEMENT
FFL -3.000 m

3 Elevation 3 - a
AR-0003 1:250

C	FEASIBILITY 2	12-12-2020	GF
B	FEASIBILITY 1	08-12-2020	GF
A	PRELIMINARY ISSUE	02-11-2020	GF
Rev	Modifications	Date	Dr by

Revisions	Checked by	RMH
-----------	------------	-----

Date Originated	03/07/14
Status	FEASIBILITY

Client	ABDULLAH MWINYI	Project	MWINYI MALL ZANZIBAR	Drawing	ELEVATIONS	Project No.	Scale	Original Size
						-	1:250	A1
						Drawing No.	Revision	
						AR-1110	C	